



ENGINE TIER 4 INTERIM

Make and modelHino Motors,JO5E-TI
 Engine Power (ISO 14396)..... 124 kW (166 hp)
 Maximum torque..... 660 Nm (1600 rpm)
 Type Water-cooled, direct injection type diesel engine
 with intercooler turbo-charger electric common-rail
 Displacement..... 5.12 l
 N. of cylinders..... 4
 Bore x stroke..... 112 x 130 mm
I.N.D.R. Integrated Noise&Sust Reduction Cooling System
Electronic engine rpm control, dial type
Auto-Idling selector returns engine to minimum rpm when all
 controls are in neutral position
The engine complies with 97/68/EC standards stage 3B (Tier4 interim)



ELECTRICAL SYSTEM

Voltage 24V
 Alternator 50 A
 Starter motor 5 kW
 Standard maintenance-free batteries..... 2
 Capacity 92 Ah



TRANSMISSION

Type hydrostatic, two-speed, Automatic DownShift
 Travel motors axial piston type, double displacement
 Brakes automatic discs type
 Final drive oil bath, planetary reduction
 Gradeability 70% (35°)
 Travel speeds:..... from 0 to 3.4 km/h (low) / from 0 to 5.5 km/h (high)
 Drawbar pull 243 kN



UNDERCARRIAGE

X-frame undercarriage design
 Reinforced track chain with sealed bushing

| | NLC | LC |
|--------------------------------|-------------|-------------|
| Track rollers (each side) | 9 | 9 |
| Carrier rollers (each side) | 2 | 2 |
| Length of track on ground (mm) | 3850 | 3850 |
| Gauge (mm) | 2390 | 2590 |
| Shoes (mm) | 600-700-800 | 600-700-800 |

Shoe type Tractor type triple grouser shoe
 No. for each side 51
 Height of grouser shoe 25 mm



HYDRAULIC SYSTEM

High capacity double pumps with electronic delivery adjustment.
 Variable displacement pistons pumps revert in neutral automatically to
 zero. Main Control Valve with Fail Safe Function and Anti drift valve.

H.A.O.A. (Hydrotronic Active Operation Aid)

E.S.S.C. (Engine Speed Sensing Control)

D.O.C. (Dipperstick Optimized Control)

“Power Boost” device

New generation A.E.P. (Advanced Electronic Processor)

3 working Modes

H Mode - Heavy duty excavation work

S Mode - Standard digging and loading work

E Mode - Fuel Economy

Attachments Modes

Breaker (One-way hydraulic flow)

Nibbler (Two-way hydraulic flow)

Attachments flow and pressure setting from cab, 20 presets storage

Hydraulic pump

Max flow at rated engine speed..... 2 x 220 l/min

Piloting circuit gear type pump..... max 20 l/min

Directional control valves

Type 8-spool valve

System Pressures

Boom, Arm&Bucket 34.3 MPa

with Power Boost 37.8 MPa

Travel 34.3 MPa

Swing 27 MPa

Pilot control Circuit..... 5 MPa



CAPACITIES

Engine oil 20.5 l

Fuel tank 330 l

Hydraulic system (incl. 114 l tank) 230 l

Cooling system 24 l



SWING

Swing motor axial piston type

Swing brake hydraulic brake

Swing speed 10.3 rpm



CAB AND CONTROLS

Operator's cab

Structure Fully enclosed steel structure

EVO operator cabine evolution in comfort and safety compliant to

ROPS (ISO 12117-2) and FOPS (ISO 10262 level II) standards

Rear camera standard

Monitor integrated multi-function control monitor

with integrated rear view camera display

Operator's seat

Operator's seat Adjustable and reclining device

Operation

Travel Two hand levers or two foot pedals for

forward and backward operations of each track independently

Excavating and swing Two hand levers for four operations

Sound Level

External guaranteed sound level

(EU Directive 2000/14/EC) LwA 95 dB(A)

Operator cab sound pressure level (ISO 6396) LpA 67 dB(A)

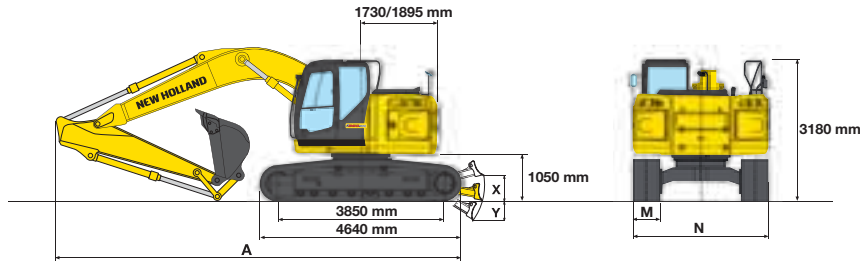


BUILT AROUND YOU

E260 CSR

DIMENSIONS - MONOBOOM

Boom length 5620 mm



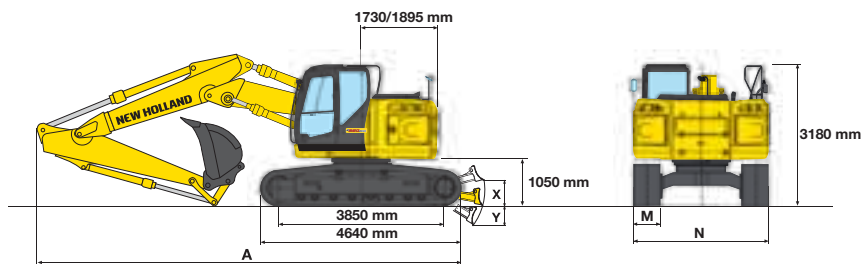
| ARM | | NLC VERSION | | LC VERSION | |
|--------------------|----|-------------|------|------------|------|
| | | 2940 | 3330 | 2940 | 3330 |
| A - Overall length | mm | 8980 | 8980 | 8980 | 8980 |

OPERATING WEIGHT - MONOBOOM

| | | NLC VERSION | | | LC VERSION | | |
|--------------------|-----|-------------|-------|-------|------------|-------|-------|
| | | 2940 | 3330 | 800 | 2940 | 3330 | 800 |
| M - Shoe width | mm | 600 | 700 | 800 | 600 | 700 | 800 |
| N - Maximum width | mm | 2990 | 3090 | 3190 | 3190 | 3290 | 3390 |
| Operating weight** | kg | 24800 | 25100 | 25400 | 24900 | 25200 | 25400 |
| Ground pressure | bar | 0.49 | 0.43 | 0.38 | 0.49 | 0.43 | 0.378 |
| Blade width | mm | 2990 | - | - | - | - | - |
| Blade height | mm | 685 | - | - | - | - | - |
| Blade weight | kg | 1680 | - | - | - | - | - |
| X - Blade max lift | mm | 560 | - | - | - | - | - |
| Y - Blade max dig | mm | 350 | - | - | - | - | - |

** 2940 mm arm, Without blade (optional) and additional counterweight (optional)

DIMENSIONS - TRIPLE ARTICULATION



| ARM | | NLC VERSION | | LC VERSION | |
|--------------------|----|-------------|------|------------|------|
| | | 2940 | 3330 | 2940 | 3330 |
| A - Overall length | mm | 9520 | 9520 | 8980 | 8980 |

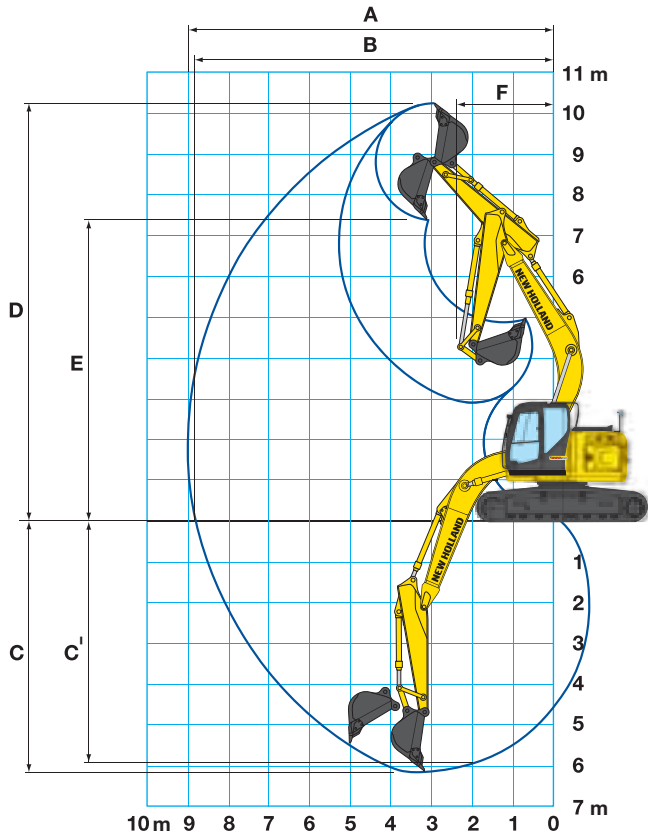
OPERATING WEIGHT - TRIPLE ARTICULATION

| | | NLC VERSION | | | LC VERSION | | |
|--------------------|-----|-------------|-------|-------|------------|-------|-------|
| | | 2940 | 3330 | 800 | 2940 | 3330 | 800 |
| M - Shoe width | mm | 600 | 700 | 800 | 600 | 700 | 800 |
| N - Maximum width | mm | 2990 | 3090 | 3190 | 3190 | 3290 | 3390 |
| Operating weight** | Kg | 25900 | 26200 | 26500 | 26000 | 26300 | 26600 |
| Ground pressure | bar | 0.51 | 0.44 | 0.39 | 0.51 | 0.44 | 0.39 |
| Blade width | mm | 2990 | - | - | - | - | - |
| Blade height | mm | 685 | - | - | - | - | - |
| Blade weight | Kg | 1680 | - | - | - | - | - |
| X - Blade max lift | mm | 560 | - | - | - | - | - |
| Y - Blade max dig | mm | 350 | - | - | - | - | - |

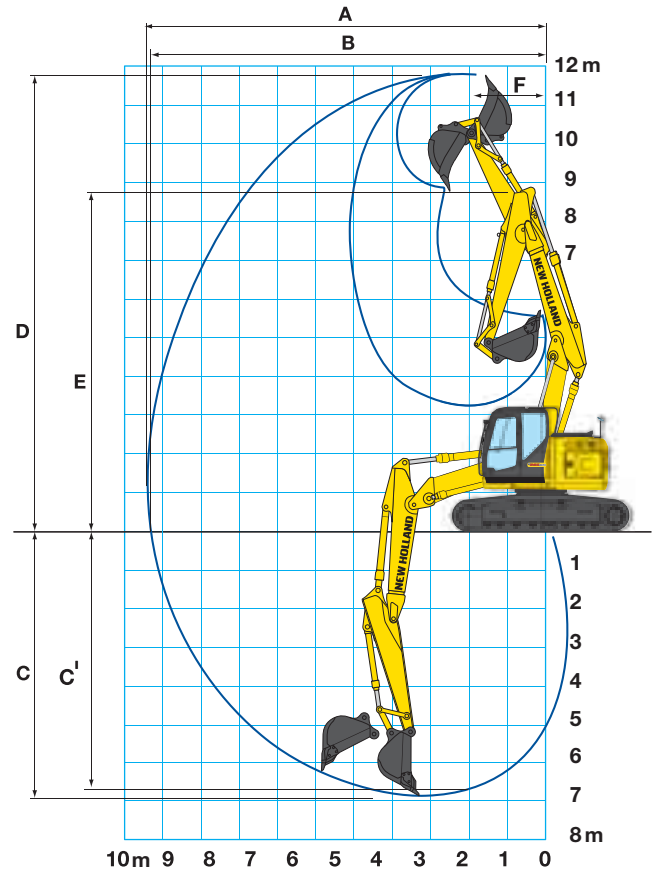
** 2940 mm arm, Without blade (optional) and additional counterweight (optional)

DIGGING PERFORMANCE

MONOBOOM



TRIPLE ARTICULATION



| ARM | | MONOBOOM | | TRIPLE ARTICULATION | |
|--|----|----------|-------|---------------------|-------|
| | | 2940 | 3330 | 2940 | 3330 |
| A - Max. digging reach | mm | 9850 | 10240 | 10360 | 10750 |
| B - Max. digging reach at ground level | mm | 9680 | 10070 | 10200 | 10590 |
| C - Max. digging depth | mm | 6650 | 7040 | 6990 | 7380 |
| C' - 2,4 mt level digging depth | mm | 6470 | 6880 | 6890 | 7300 |
| D - Max. digging height | mm | 11210 | 11550 | 11950 | 12290 |
| E - Max. dumping clearance | mm | 8330 | 8670 | 9030 | 9400 |
| F - Min. swing radius | mm | 1930 | 2370 | 1440 | 1880 |

BREAKOUT FORCE

| ARM | | 2940 | 3330 |
|-------------|-----|-------|-------|
| Bucket | daN | 14300 | 14300 |
| Dipperstick | daN | 10200 | 9680 |

WITH "POWER BOOST" ON

| ARM | | 2940 | 3330 |
|-------------|-----|-------|-------|
| Bucket | daN | 15700 | 15700 |
| Dipperstick | daN | 11200 | 10600 |

PARTS AND SERVICE

The New Holland dealer network is, in itself, the best guarantee of continued productivity for the machines it delivers to its customers. New Holland service technicians are fully equipped to resolve all maintenance and repair issues, with each and every service point providing the high standards they are obliged to observe under New Holland's stringent quality guidelines. The New Holland global parts network ensures fast, reliable, replacement parts for less downtime, increased productivity and, of course, profitable operation for its customers.



AT YOUR OWN DEALERSHIP

The information contained in this brochure is intended to be of general nature only. The NEW HOLLAND KOBELCO CONSTRUCTION MACHINERY S.p.A. company may at any time and from time to time, for technical or other necessary reasons, modify any of the details or specifications of the product described in this brochure. Illustrations do not necessarily show products in standard conditions. The dimensions, weights and capacities shown herein, as well as any conversion data used, are approximate only and are subject to variations within normal manufacturing techniques.

Published by NEW HOLLAND KOBELCO CONSTRUCTION MACHINERY S.p.A.
Printed in Italy - MediaCross Firenze - Cod 30679GB - Printed 11/12

Printed on recycled paper
CoC-FSC 000010 CQ Mixed sources



ELEMENTAL
CHLORINE
FREE
GUARANTEED



www.newholland.com

